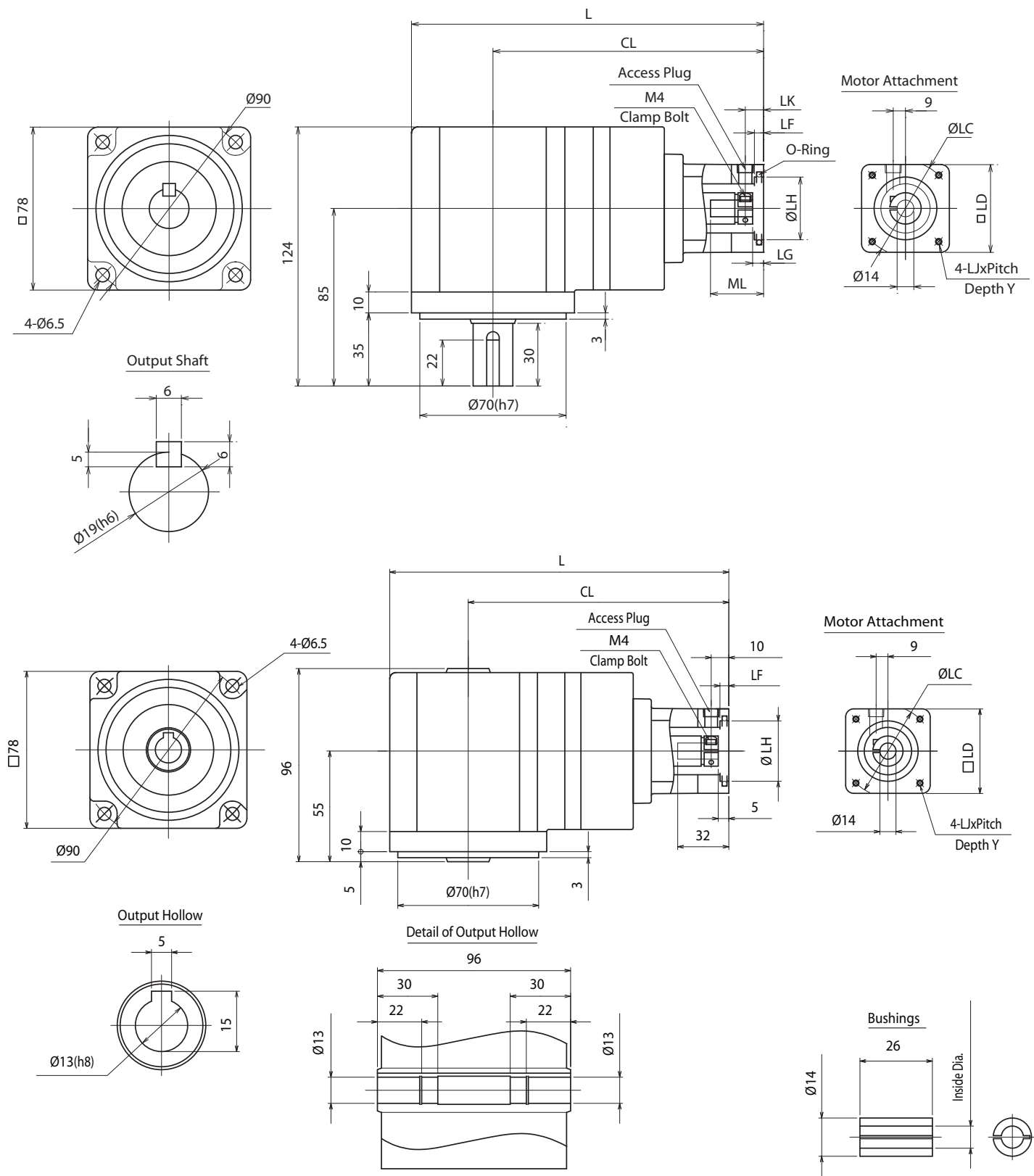


NEV SERIES Right-angle Planetary

NEV B-Frame 2-Stage Specifications

Frame Size	B (78mm)					
Ratio	Units	Note	5	9	15	27
Nominal Output Torque	[Nm]	--	6	6	10	10
Maximum Acceleration Torque	[Nm]	--	20	20	30	30
Emergency Stop Torque	[Nm]	--	35	40	50	50
Nominal Input Speed	[rpm]	--	3000			
Maximum Input Speed	[rpm]	--	6000			
No Load Running Torque	[Nm]	--	0.18			
Permitted Radial Load	[N]	--	1000	1200	1500	1800
Permitted Axial Load	[N]	--	500	600	750	900
Moment of Inertia ($\leq \emptyset 8$)	[kgcm ²]	--	--	--	--	--
Moment of Inertia ($\leq \emptyset 14$)	[kgcm ²]	--	0.275	0.110	0.059	0.146
Efficiency	[%]	--	85			
Torsional Rigidity	[Nm/arcmin]	--	0.4			
Maximum Torsional Backlash	[Arc-min]	--	≤ 30			
Noise Level	[dB]	--	≤ 73			
Protection Class	--	--	IP65			
Ambient Temperature	[°C]	--	0-40			
Permitted Housing Temperature	[°C]	--	90			
Weight (Solid Output Shaft)	[kg]	--	3.8			
Weight (Hollow Output Shaft)	[kg]	--	3.6			

NEV B-Frame (78mm) 2-Stage Dimensions – Ratios: 5:1, 9:1, 15:1, 27:1

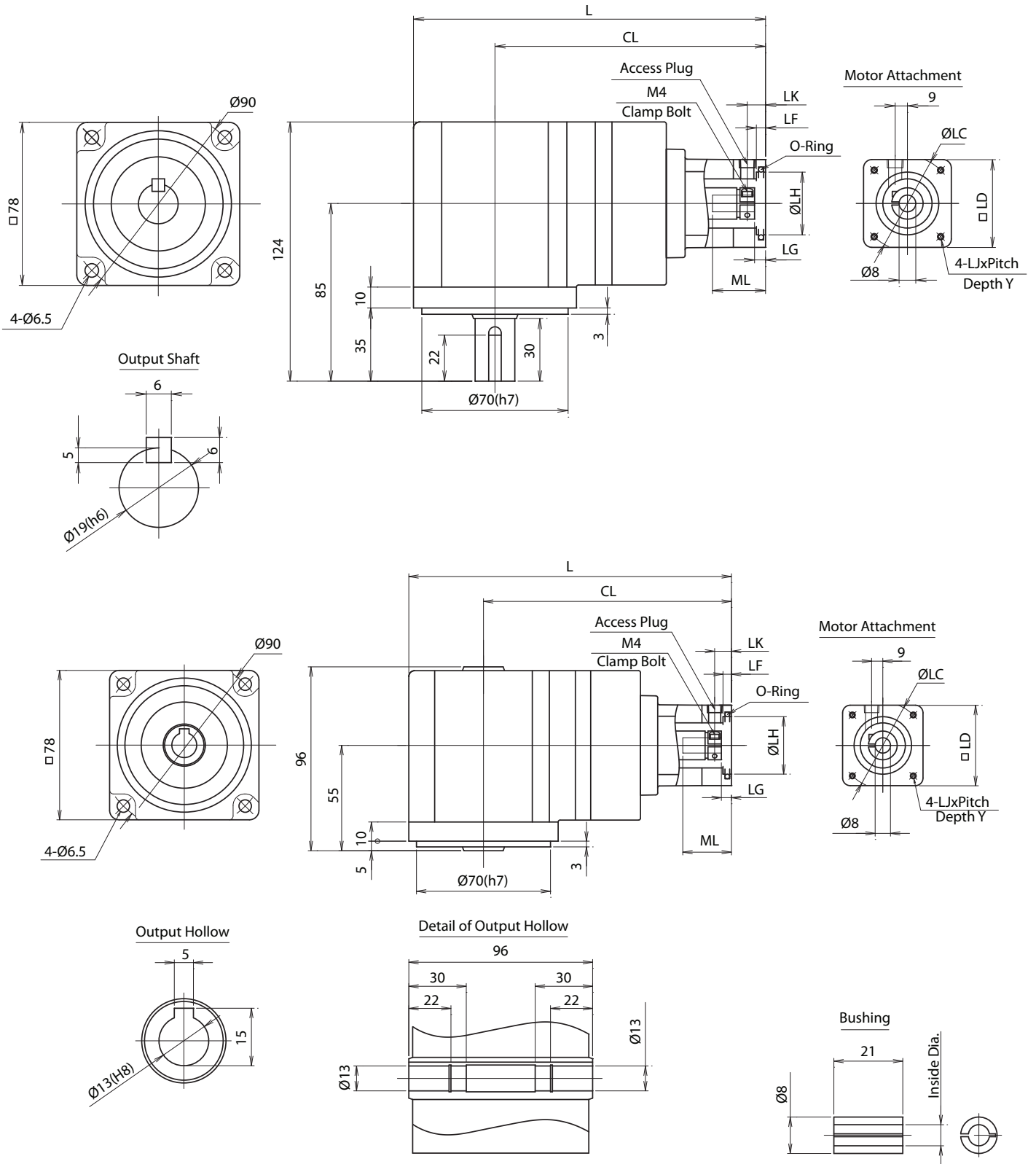


NEV SERIES Right-angle Planetary

NEV B-Frame 3-Stage Specifications

Frame Size	B (78mm)				
Ratio	Units	Note	45	75	105
Nominal Output Torque	[Nm]	--	10	15	15
Maximum Acceleration Torque	[Nm]	--	30	30	30
Emergency Stop Torque	[Nm]	--	50	50	50
Nominal Input Speed	[rpm]	--	3000		
Maximum Input Speed	[rpm]	--	6000		
No Load Running Torque	[Nm]	--	0.109		
Permitted Radial Load	[N]	--	1800	1800	1800
Permitted Axial Load	[N]	--	900	900	900
Moment of Inertia ($\leq \emptyset 8$)	[kgcm ²]	--	0.091	0.083	0.078
Moment of Inertia ($\leq \emptyset 14$)	[kgcm ²]	--	--	--	--
Efficiency	[%]	--	80		
Torsional Rigidity	[Nm/arcmin]	--	0.4		
Maximum Torsional Backlash	[Arc-min]	--	≤ 30		
Noise Level	[dB]	--	≤ 63		
Protection Class	--	--	IP65		
Ambient Temperature	[°C]	--	0-40		
Permitted Housing Temperature	[°C]	--	90		
Weight (Solid Output Shaft)	[kg]	--	3.9		
Weight (Hollow Output Shaft)	[kg]	--	3.7		

NEV B-Frame (78mm) 3-Stage Dimensions – Ratios: 45:1, 75:1, 105:1



NEV